

System Prerequisites

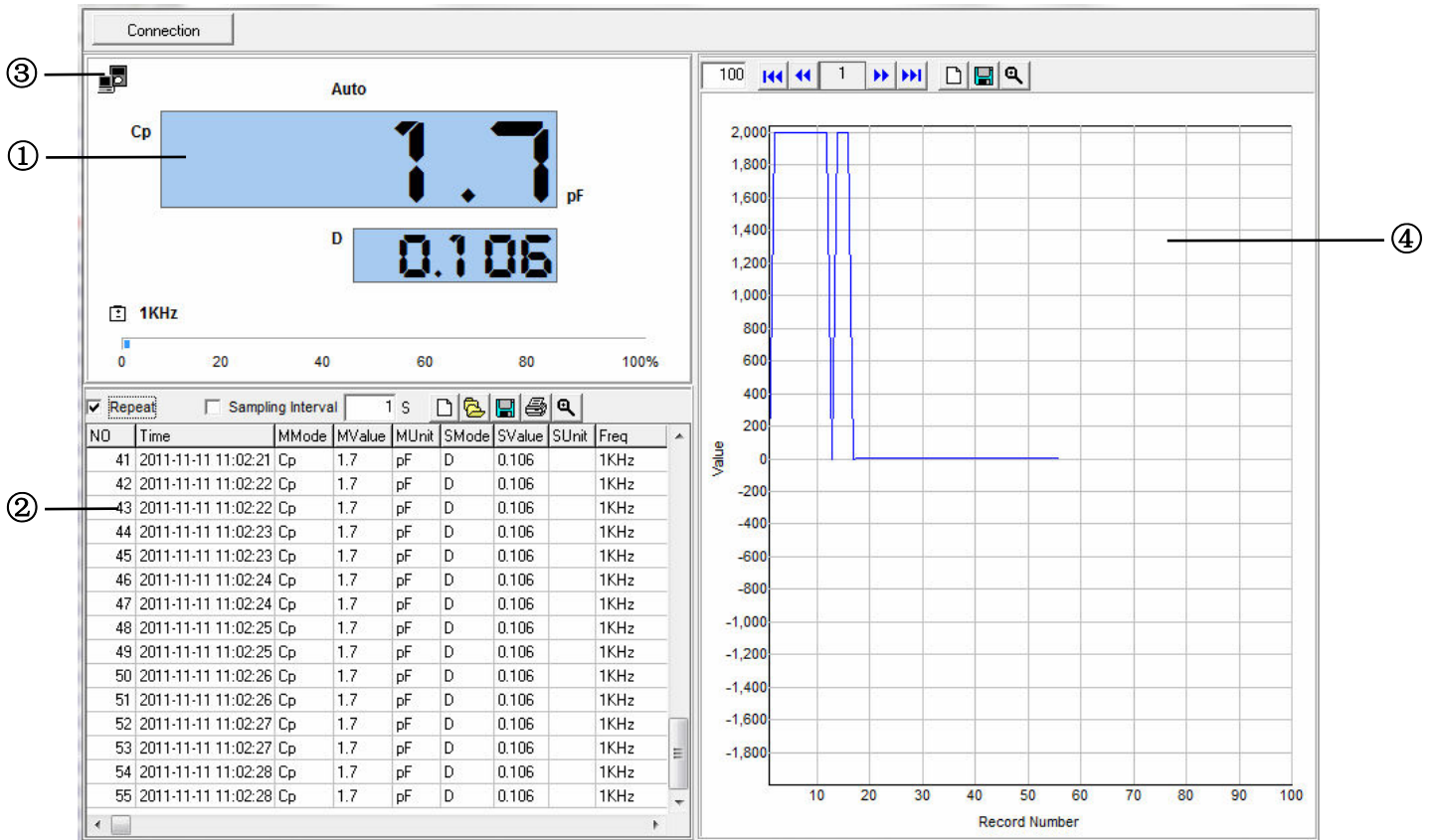
Recommended configuration

Processor	Pentium® 4 or higher with support of all customary operating systems
Operating system	Microsoft Windows® 2000 / XP / Vista / Win7
Memory	512 MB RAM or higher
Monitor	VGA (1024 x 768)
Drive	CD-ROM
Input device	Mouse or compatible
Interface	USB for data transmission

Install Software


- Insert the provided CD disk into CD-ROM drive.
- Double-click “XXX_VX.XX.exe” (X can be 0 to 9 or blank, indicating the software version)
- The pop-up windows will guide you through the program setup process.

Main Screen




① Main display screen of measurement

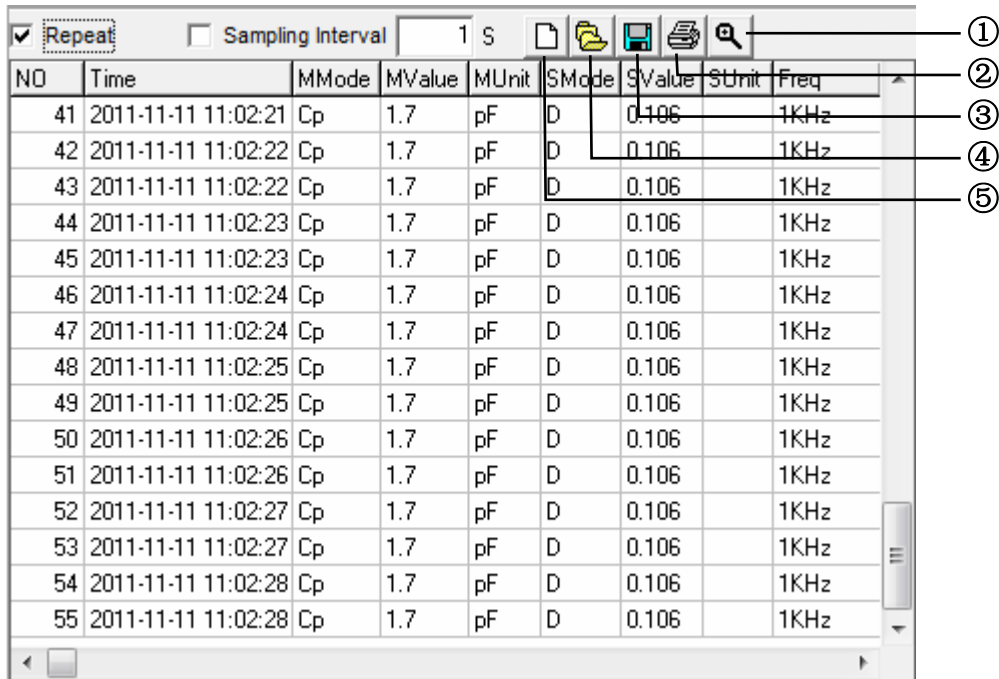
② Secondary display screen for measurement

③  Blinking indicates meter is connected to the software

④ Measurement data in graph

Using Program

Click "Connection"  and is blinking indicates meter is successfully connected to the PC and meter will automatically start taking measurements. Primary display screen shows measurement, secondary display screen shows all measurement data.

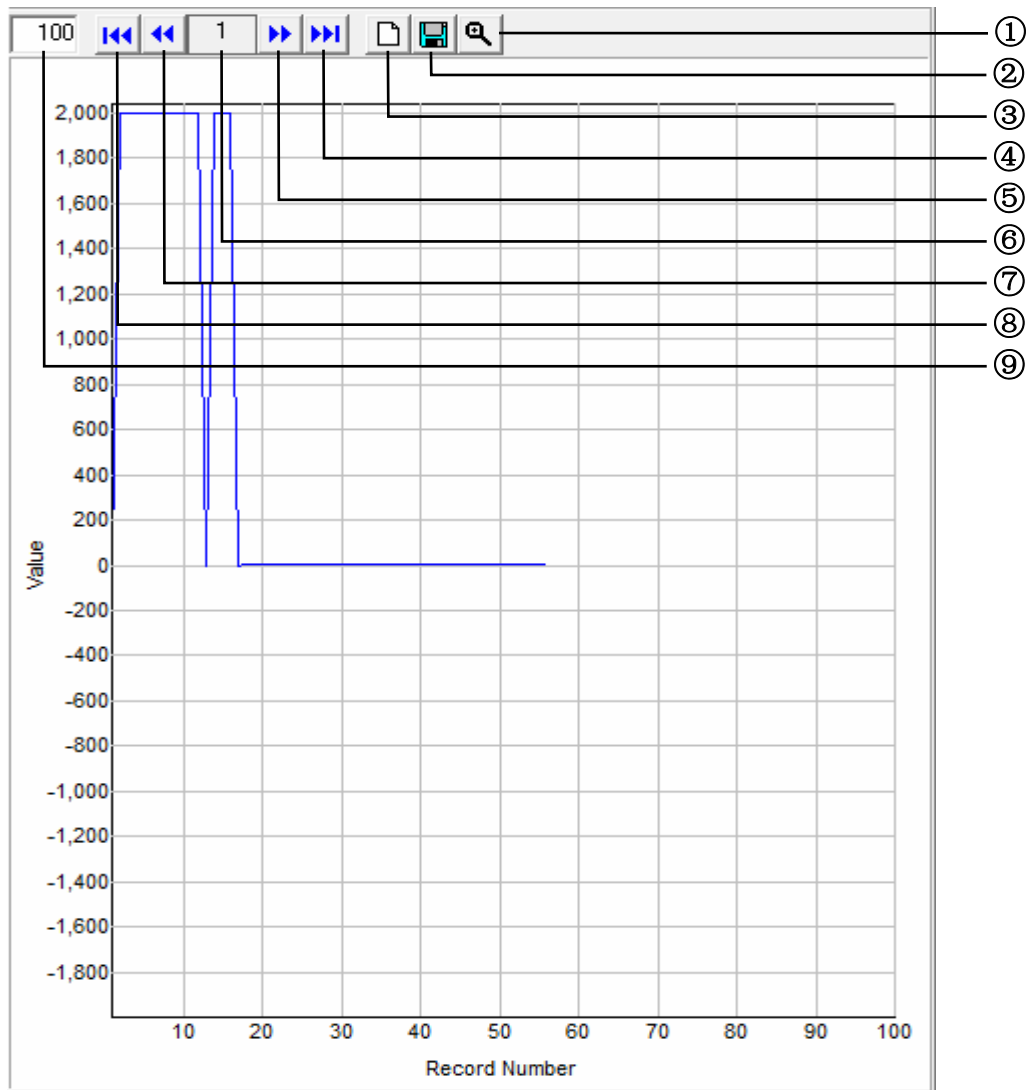


- ① Zoom
- ② Print data
- ③ Save data (*.txt, *.xls, *.xml)
- ④ Open files (*.txt, *.xls, *.xml)
- ⑤ Deleting current data and create a new data.

Repeat: Tick to display every measurement with the interval you set. Un-tick “Repeat”, the secondary display screen will only show measurement result that is different from the last measured temperature. The graph display will show complete measurement result in graphics despite “Repeat” is ticked or un-ticked.

Sampling Interval allows you to set the sampling intervals of measurement (1 to 9999 seconds).

Note: when measurement data reaching to 10000 sets (measurement No.), a warning message will pop up and stop measurements. Save or clear the measurement data before continuing next measurements.



- ① Zoom graphic
- ② Save graph in current page as *.bmp
- ③ Deleting current data and create a new data.
- ④ Last page
- ⑤ Next page
- ⑥ Current page
- ⑦ Previous page
- ⑧ First page
- ⑨ Set numbers of measurement data on graph display